



THE "LOW" DOWN

Lowerhouses CE (VC) JI
& EY School

8th

October

2021

*Working and achieving together to enrich lives
and nurture bright futures*

Harvest Celebrations

We are holding our Harvest Celebrations at school on **Tuesday 19th October for Reception & KS1** and **Thursday 21st October for KS2**, both services starting at 2.30pm. We would like to invite one parent/carer per family to join us in the school hall. This year we are once again supporting The Welcome Centre by collecting donations for their Food Bank. We are asking children to bring something for the collection into school between Monday 18th and Thursday 21st October.

The Welcome Centre are often particularly short of the following items:

Tins of meat, spaghetti or potatoes, baked beans, jam, sugar, tea, instant noodles, rice, long life milk, Cup a Soups, dried mash potatoes, toilet rolls, deodorant, shower gel and shampoo.

You have always been so generous in your donations for our food collections and we thank you in anticipation of your support for this important local charity.

Flu Immunisations

This is a reminder to complete the online consent form for the flu immunisations which take place on 9th December. Please click the link below to complete the consent form, even if you do not wish your child to receive the immunisation. You will need the following code for your child's school **107698**.

<https://www.locala.org.uk/services/immunisation-service/flu-vaccination-south-kirklees>

The link will also take you to a page which will give you more information about the immunisation programme and answer any questions you may have.

Good News!

We are happy to share with you the lovely news that Mrs Marcus has had a baby girl and Mum and baby are doing well. We send them all our best wishes from Lowerhouses School at this very special time.

High School Applications – Year 6

All applications for a place at High School in September 2022 must be completed online www.Kirklees.gov.uk/admissions and submitted by **Sunday 31st October 2021**. If you require any help with your application, please contact the school office

Coats and footwear

Now that the weather has started to become a little cooler, please could you ensure children come to school with a coat for outside playtime and it has their name inside. Please also ensure your child is wearing suitable footwear for the weather conditions. Thank you.

Collective Worship

Our Christian Value focus for this half term is
Compassion

Community Events

Attached with this newsletter is lots of information regarding events in our community for both children and adults that may be of interest to you.

Morrisons 'Good to Grow' Scheme

We have registered our school for the Morrisons 'It's Good to Grow' Scheme. This is a token collection scheme that allows schools to collect for free gardening equipment to get kids outdoors and growing. Don't forget to scan your app or MyMorrisons card at checkout every time you shop to receive your Grow Tokens. Once you've selected our school, you'll be able to donate your Grow Tokens to us.

The logo features the text 'It's Good to Grow' in a white, rounded font, with a red tomato replacing the letter 'o' in 'Grow'. Below this, the word 'from' is written in a smaller font, followed by the Morrisons logo, which consists of a stylized yellow sunburst above the word 'Morrisons' in a white, sans-serif font. The background is green with faint outlines of vegetables like tomatoes and leafy greens.

Diary Dates

Tues 19 th Oct 2.30pm	Reception & KS1 Harvest service in school (one parent per family may attend)
Thurs 21 st Oct 2.30pm	KS2 Harvest service in school (one parent per family may attend)
Fri 22nd Oct	School closes for half term 3.15pm
Sun 31 st Oct	High school application deadline – Year 6
Mon 1st Nov	School reopens
Thurs 11 th Nov	Year 5 Northern Ballet trip
Tues 23 rd Nov	School Christmas Fair
Thurs 25 th Nov 9am	Family Christmas Craft morning
Tues 7 th Dec	Family Christmas Lunch Day
Weds 8 th Dec	Year 2 Christmas Journey at Almondbury Church
Thurs 9 th Dec	Flu immunisations Reception – Year 6

Term Dates 2021 – 2022

School Opens	School Closes
Tuesday 7 th September 2021	Friday 22 nd October 2021
Monday 1 st November 2021	Friday 17 th December 2021
Tuesday 4 th January 2022	Thursday 17 th February 2022
Monday 28 th February 2022	Friday 8 th April 2022
Monday 25 th April 2022	Friday 27 th May 2022
Monday 6 th June 2022	Friday 22 nd July 2022

Other dates to remember

Friday 3rd December 2021 – Training day School closed
Monday 2nd May 2022 – May Day School closed
Tuesday 3rd May 2022 – Additional holiday School closed



Autumn wild plants

Nurturing Healthy lives outdoors

Find out how to use wild plants, identification, what you can eat or use for health benefits

Saturdays

9th Oct at Clare Hill Centre, HD1 5BS 2-4pm

16th Oct at Stirley Comm Farm, HD4 6FA 2-4pm

23rd Oct at Newsome Scout Hall, HD4 6JJ 11-1pm

30th Oct at Clare Hill Centre, HD1 5BS 2-4pm

Free event, open to all, booking required

Covid safe space & social distancing

To book 07845 415289 or info@growingworks.org.uk

www.growingworks.org.uk

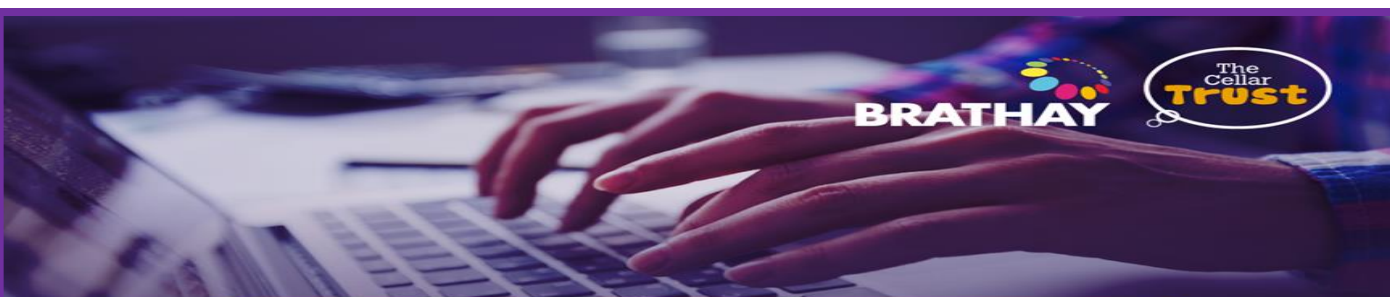
Registered charity 1160003

**growing
works**

Supported by



**WEvolve funding & support provided by
Ward Councillors from Huddersfield
Central & North Place Partnerships**



PARENTS ONLINE

Parenting can be tough. That's why The Cellar Trust and Brathay are working together to provide a non-judgemental ear when you need it most.

PARENTS Online provides text-based emotional support from trained volunteers through an online platform. You can chat confidentially and openly about your feelings with someone who is trained to listen and support you through whatever you're facing. Sometimes all you need is to be listened to and that's where we can help.

For more information visit: thecellartrust.org

We provide you with:

- A confidential listening service which can be used anonymously
- Support from a fully trained worker, with their own experience of parenting
- A safe space to talk openly without judgement, about anything that's on your mind

Our chat service is LIVE on Mon - Fri | 6pm - 9pm

PARENTSONLINE.CO.UK